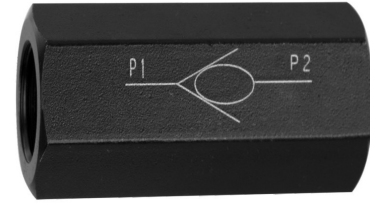


Features

- Allows flow in the direction from P1 to P2 and stops flow from P2 to P1.
- For use with Mineral Oil, -30°C to +80°C, viscosity 2.8 to 500mm²/s
- .05 bar (7.3 psi) opening pressure.

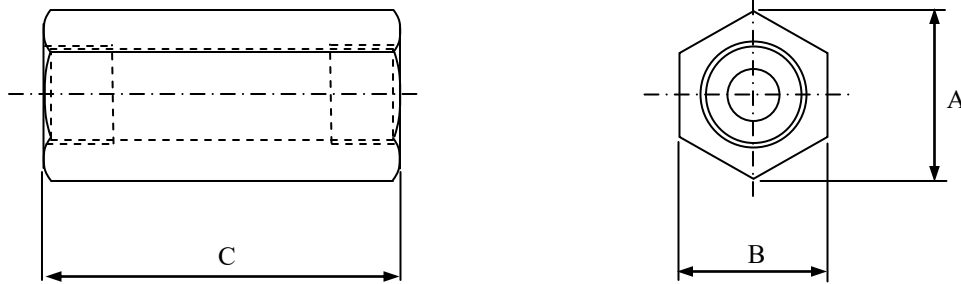


Ordering Details

V	Valve			
I	Inline connection			
C-	Check Valve			
O8-	Port Size			
1	Series:			
		Nominal Thread Size	Code NPTF Pipe Thread	Code SAE O-ring Boss
		1/4"	N.25	-
		3/8"	N.37	-
		1/2"	N.5	O8
		3/4"	N.75	O12
		1"	N1	O16

Example Part Number: VIC-O8-1

Dimensions and Technical data



Nominal Thread Size	1/4"	3/8"	1/2"	3/4"	1"
NPTF	1/4"	3/8"	1/2"	3/4"	1"
SAE	-	-	-8	-12	-16
A mm (inch)	22 (.86)	28 (1.1)	34.5 (1.35)	41.5 (1.63)	53 (2.09)
B mm (inch)	19 (.75)	24 (.94)	30 (1.18)	36 (1.42)	46 (1.81)
C mm (inch)	58 (2.28)	58 (2.28)	72 (2.83)	85 (3.35)	98 (3.86)
Max. Flow lpm (gpm)	15 (4)	30 (8)	40 (11)	120 (32)	200 (53)
Max. Pressure bar (psi)	315 (4538)	315 (4538)	315 (4538)	315 (4538)	315 (4538)
Weight kg (lbs.)	.1 (.22)	.2 (.44)	.3 (.66)	.5 (1.1)	1 (2.2)